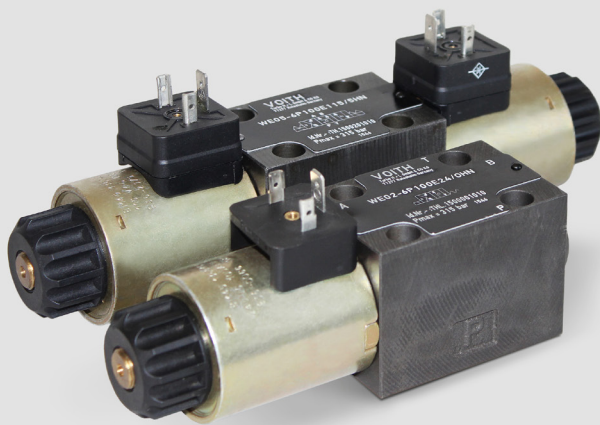


## 4/2, 4/3 Directional Control Valve NG 6 ISO 4401, directly controlled Technical Data Sheet



- directly controlled piston valve
- high switching capacity
- saving energy by low flow resistance
- pressure sealed oli-immersed solenoids for direct or alternating current
- easy service: solenoid can be changed without leakage while the valve is under system pressure; no tools are required
- solenoids can be rotated 3 x 90°, allowing alternative connector positions
- port connection pattern according to ISO 4401

## Technical Data

### General

Type of valve	piston valve
Operation	electric
Mounting	4x M5x45 DIN912
Connection of ports	mounting plate
Mounting position	mountable in any position
Ambient temperature	-25 to +50 °C
Mass valve	2.2 kg

### Hydraulic

Operation pressure P,A,B	315 bar
Operation pressure T	160 bar
Hydraulic oil temperature	-10 to +70 °C
Viscosity range	20 to 400 mm <sup>2</sup> /s
max. flow	80 l /min

### Electric

Voltage (±10%)	24 V DC	230V, 50Hz AC
Switching time on *	40 ms	40 ms
Switching time off **	40 ms	40 ms
Power consumption P20	32 W	
Start up peak P20		39 VA
Duty factor	100%	100%
Protection system		
DIN 40050	IP65	IP65

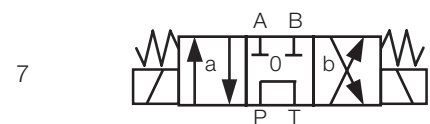
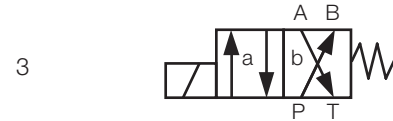
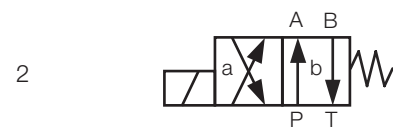
\* at 24V DC ±5%

\*\* at terminal voltage = -50V at free circuit

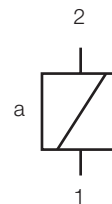
### Options

- alternative voltages
- alternative symbols - data sheet: 14607-DSH
- alternativ connectors
- 8 watt variant: max. operating pressure 140 bar  
max. rate of flow 40 l/min

## Symbol

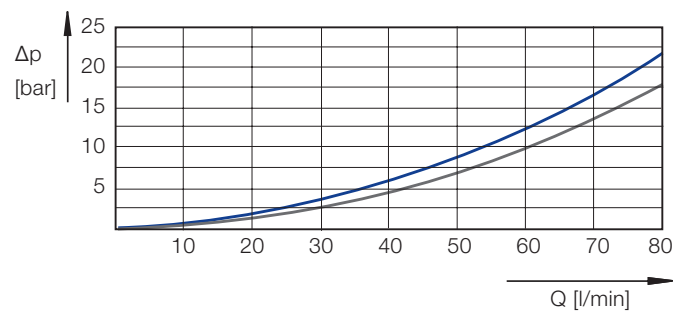


## Electric Connection



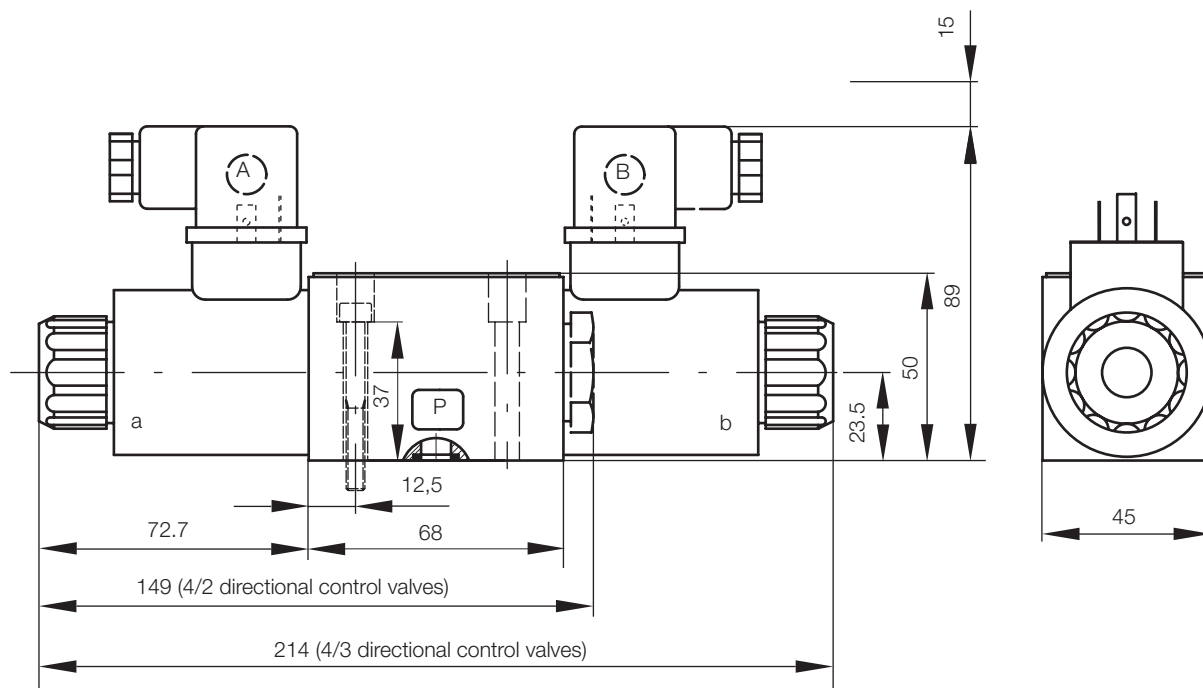
connector type: DIN 43650, design A

## Characteristic Curve



hydraulic oil 35 mm<sup>2</sup>/s, 50°C

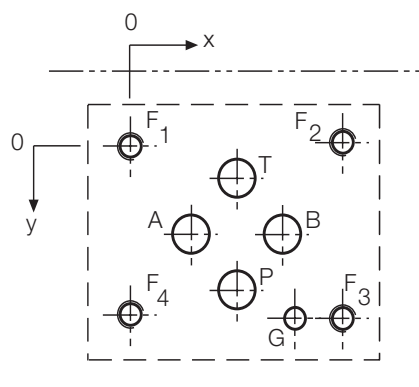
## Dimensional drawing



electric connector not included  
fastening screws not included, 4x M5x45 DIN 912 - 10.9, MA = 8 Nm

all dimensions in mm

## Port Connection Pattern NG 6 ISO 4401



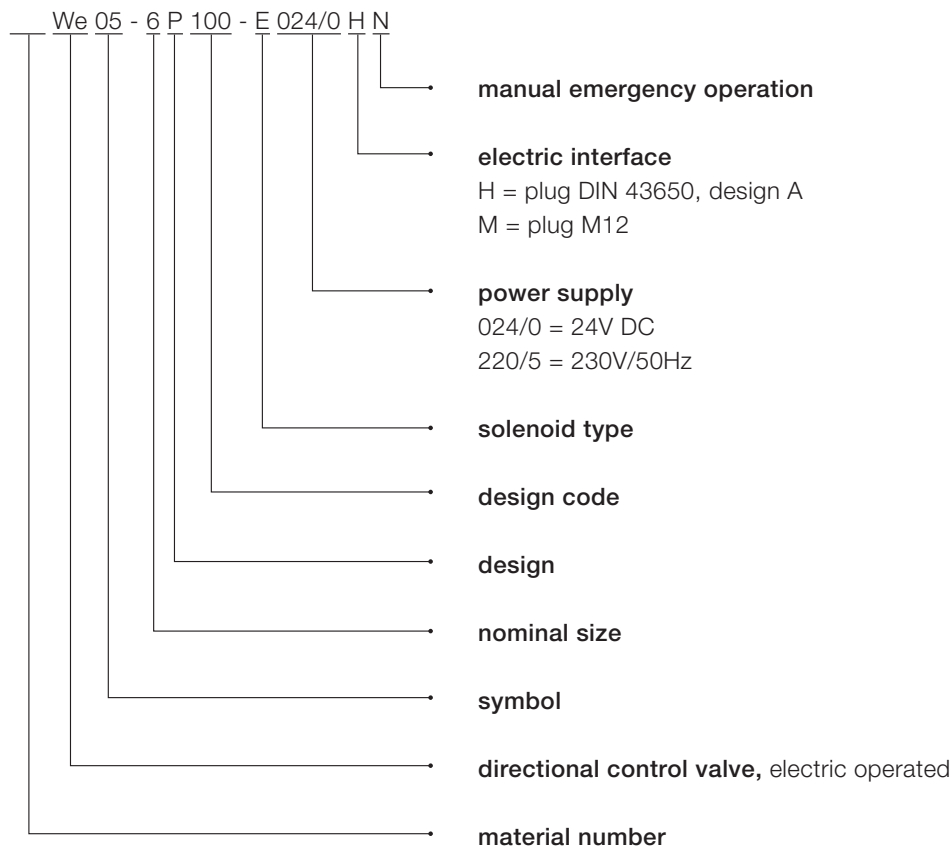
view: fastening side of mounting plate

	P	A	T	B	F1	F2	F3	F4	G
Ø max [mm]	7,5	7,5	7,5	7,5	-	-	-	-	4
x [mm]	21,5	12,7	21,5	30,2	0	40,5	40,5	0	33
y [mm]	25,9	15,5	5,1	15,5	0	-0,75	31,75	31	31,75

F: M5, thread depth minimum 1.5 x Ø  
G: bore hole depth minimum 1.5 x Ø  
Various single and multiple mounting plates are available.

## Type Code

---



This is a translated document. Original language: german.  
Legally binding language version of document: german.

Voith Turbo H + L Hydraulic GmbH & Co. KG  
Schuckertstraße 15  
71277 Rutesheim, Germany  
Tel. +49 7152 992 3  
Fax +49 7152 992 400  
sales-rut@voith.com  
[www.voith.com/hydraulic-systems](http://www.voith.com/hydraulic-systems)



**VOITH**  
Engineered Reliability